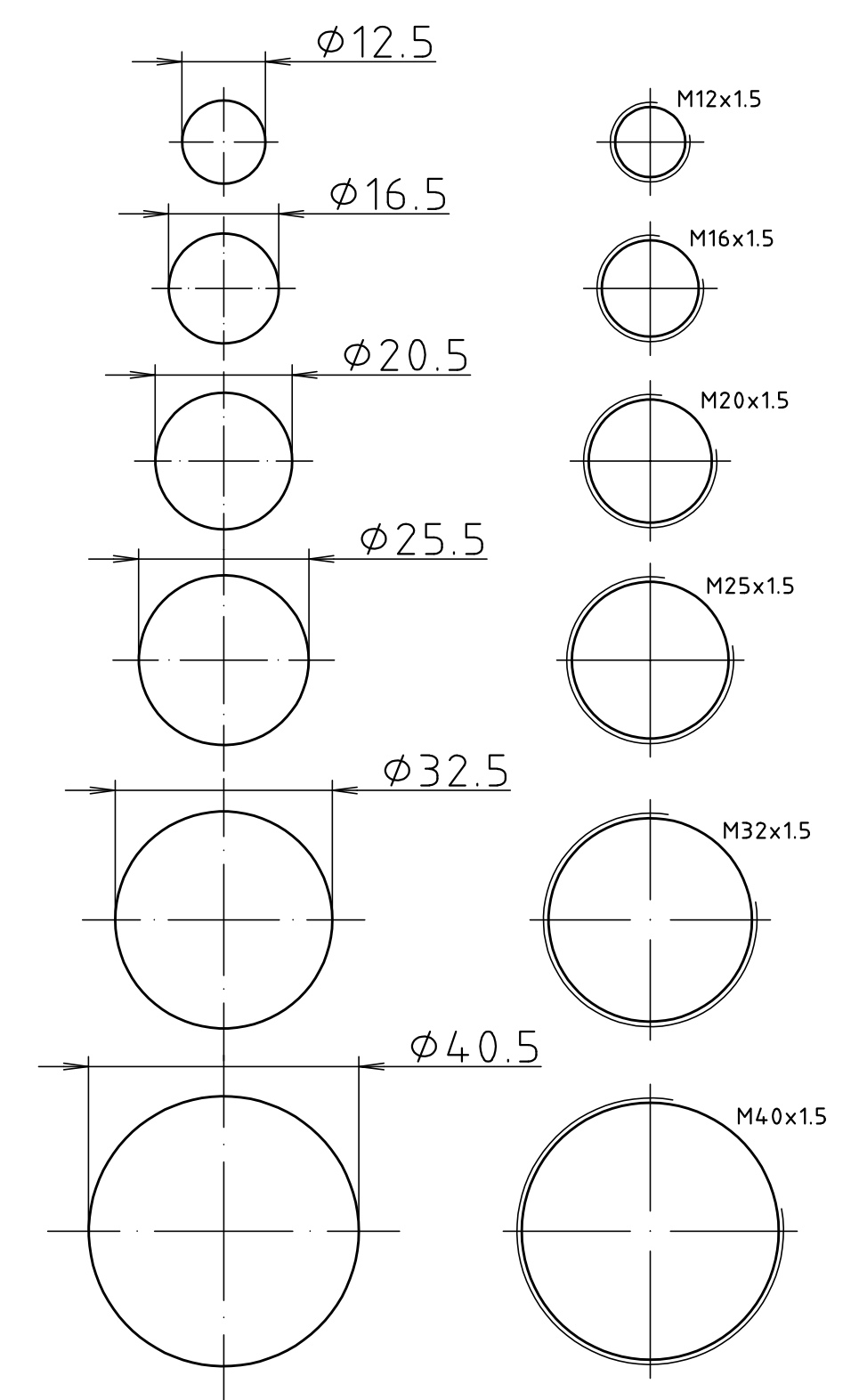


Metrische Kabelverschraubungen M 1:1
Metric cable glands

Durchgangsbohrung für Montage mit Gegenmutter.
Through-hole for mountings with counter nuts.

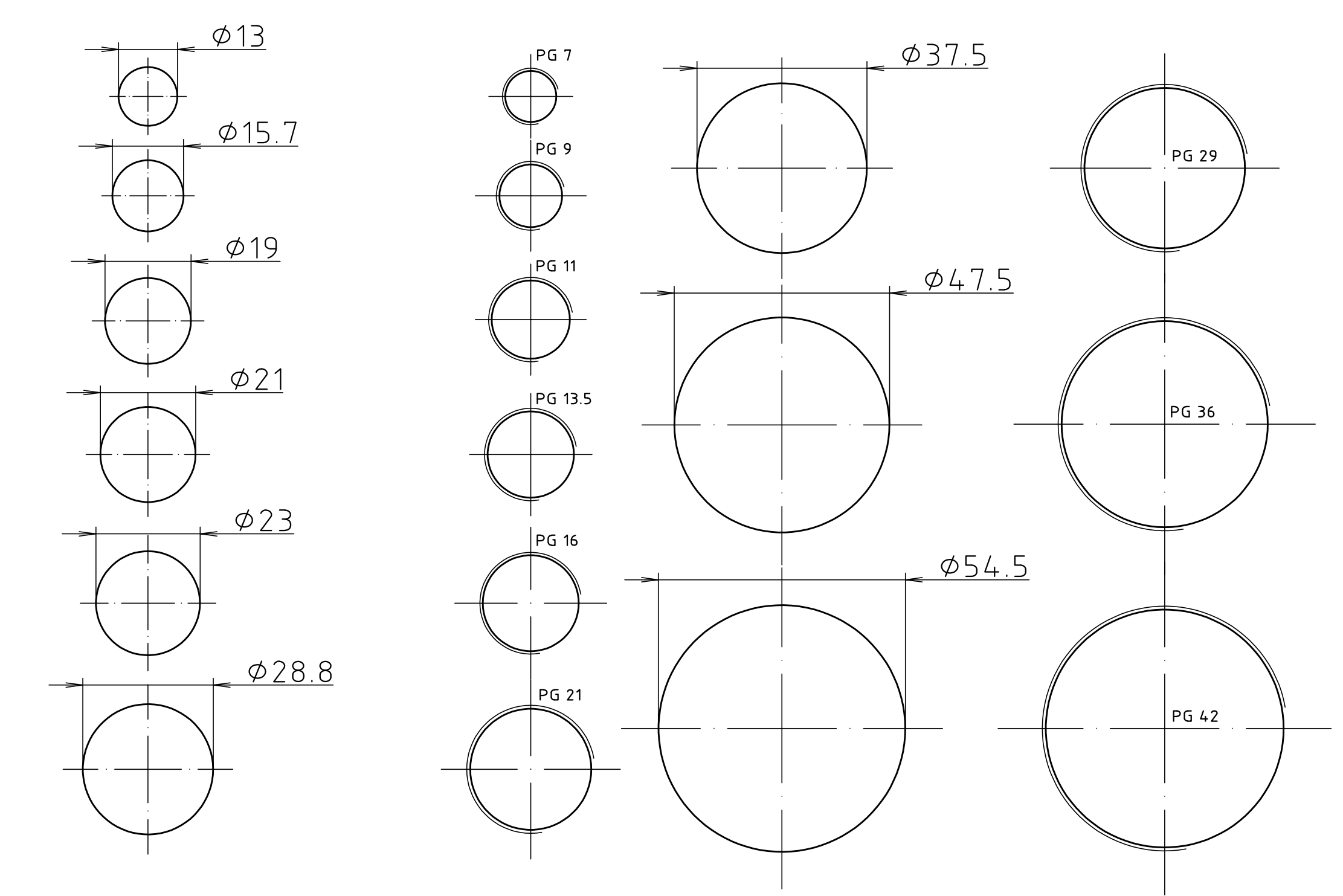
Gewindebohrung für Direktmontage.
Threaded hole for mountings without counter nuts.



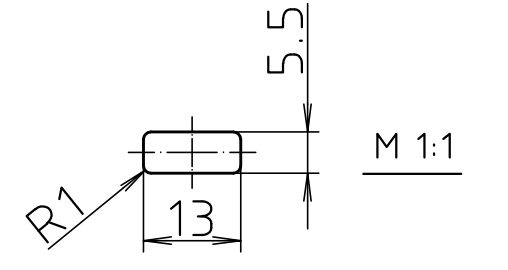
Pg - Kabelverschraubungen M 1:1
PG - cable glands

Durchgangsbohrung für Montage mit Gegenmutter.
Through-hole for mountings with counter nuts.

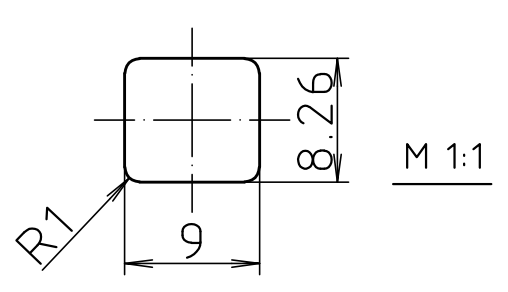
Gewindebohrung für Direktmontage.
Threaded hole for mountings without counter nuts.



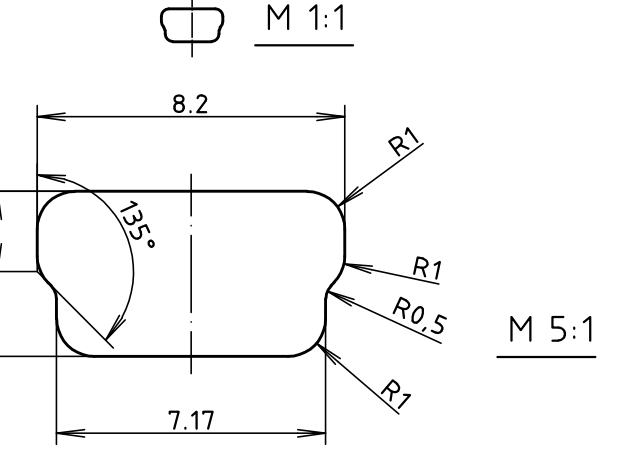
USB - Typ A
USB - Type A



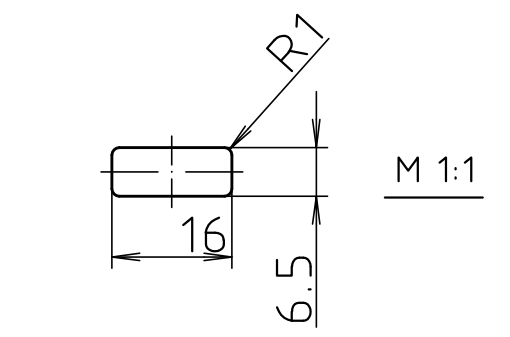
USB - Typ B
USB - Type B



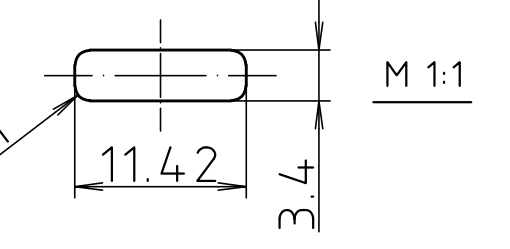
MINI USB
Mini USB



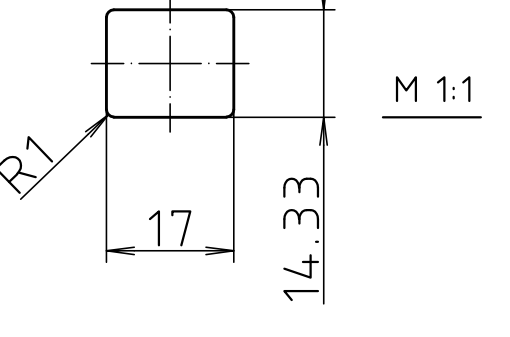
HDMI - Typ A
HDMI - Type A



HDMI - 1.3
HDMI - 1.3
Mini-Stecker Typ C
Mini-plug type C



RJ45
RJ45



Maßstab / Scale: 1:1 (2:1, 5:1)

Zeichnungs-Nr. / Drawing-No.: 1K 9999.734.1.01

Artikel / Article: Bearbeitung / machining
Standards-Fräskonturen
Standard-openings (milling)

A.Nr. / Datum / Alt.-No. / Date: 2 804.192
DISK: 2 804.192
Datum / Date: 26.07.2018 JL

BOPLA
A Phoenix Mecano Company

"Schutzvermerk nach DIN ISO 16016 beachten" "Please pay attention to copyright note DIN ISO 16016"