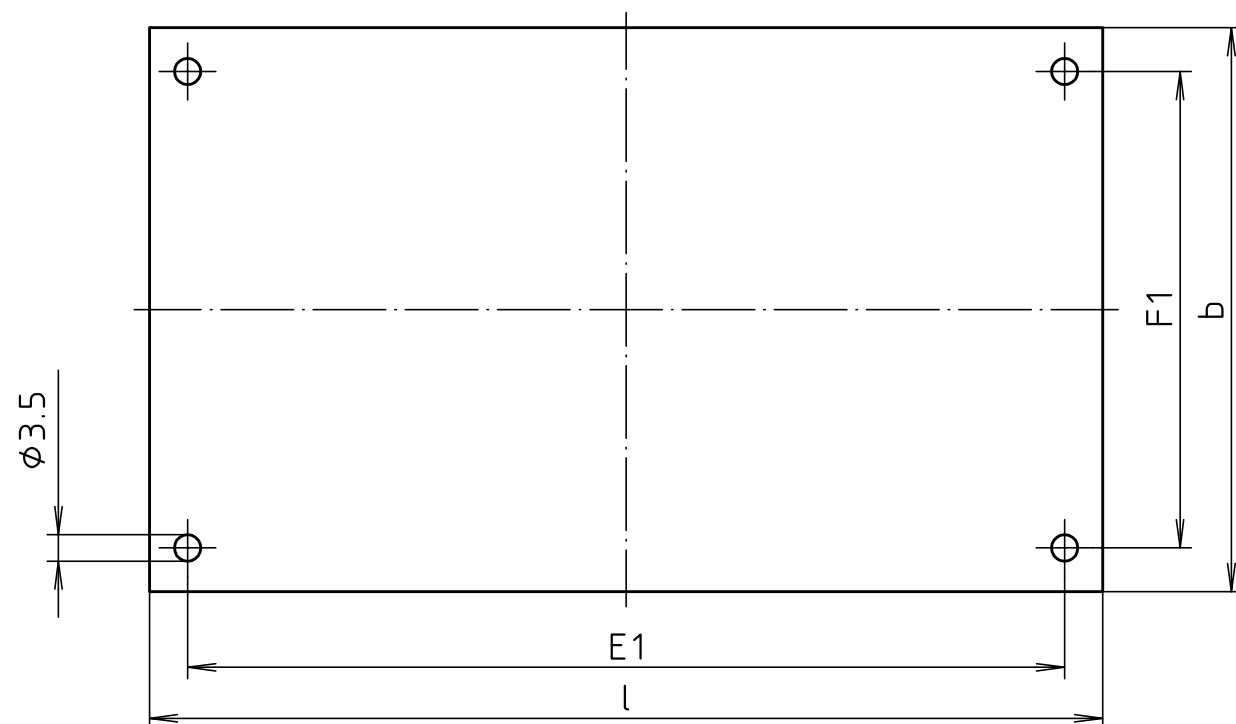


"Schutzvermerk nach DIN ISO 16016 beachten" "Please pay attention to copyright note DIN ISO 16016"

EG-Montageplatte / EC mounting plate

Material: Hartpapier, 2mm dick /  
material: hard paper, 2mm thick

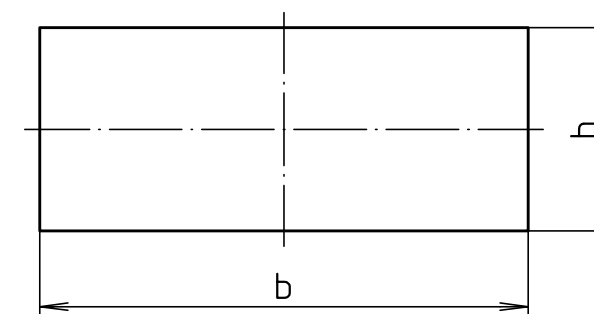


Modell/ model	l	b	E1	F1
EG-M10	77	45.5	66	39
EG-M12	101	59.6	86	48
EG-M15	126.1	74.6	116	63
EG-M20	176	104.6	153.7 *	88.9

\* = 7mm ausser Mitte / 7 mm off-center

EG-Alu-Frontplatte / EC-aluminum front panel

Material: Alu-eloxiert, 1mm dick /  
material: anodized aluminum, 1mm thick



Modell/ model	b	h	für / for
EG-F 1240	49.6	21.9	EG 1240
EG-F 1250	49.4	31.9	EG 1250
EG-F 1545	64.6	26.9	EG 1545
EG-F 1560	64.3	41.9	EG 1560
EG-F 2050	94.7	32.2	EG 2050
EG-F 2070	94.3	52.2	EG 2070

Maßstab/ Scale: 1:1		
Zeichnungs-Nr. / Drawing-No.: 3G 5010.234.02		
Artikel / Article: EG-Frontplatten / EG Montageplatten / EG front panels / EG mounting plates Katalogzeichnung / Catalogue drawing		
2752	15.01.93	 <b>BOPLA</b> A Phoenix Mecano Company
Ä.Nr/ Alt-No.:	Datum/ Date:	
DISK: 2 800 808		
Datum / Date: -		