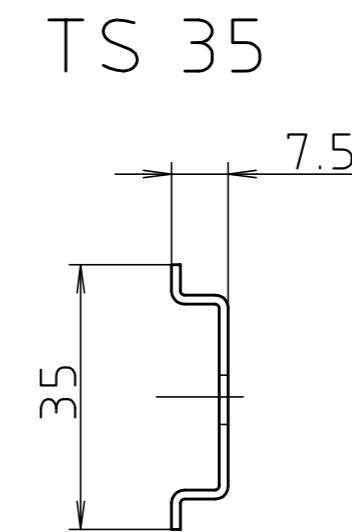
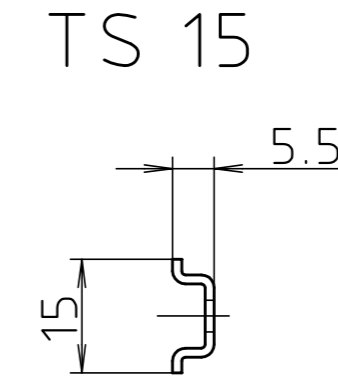
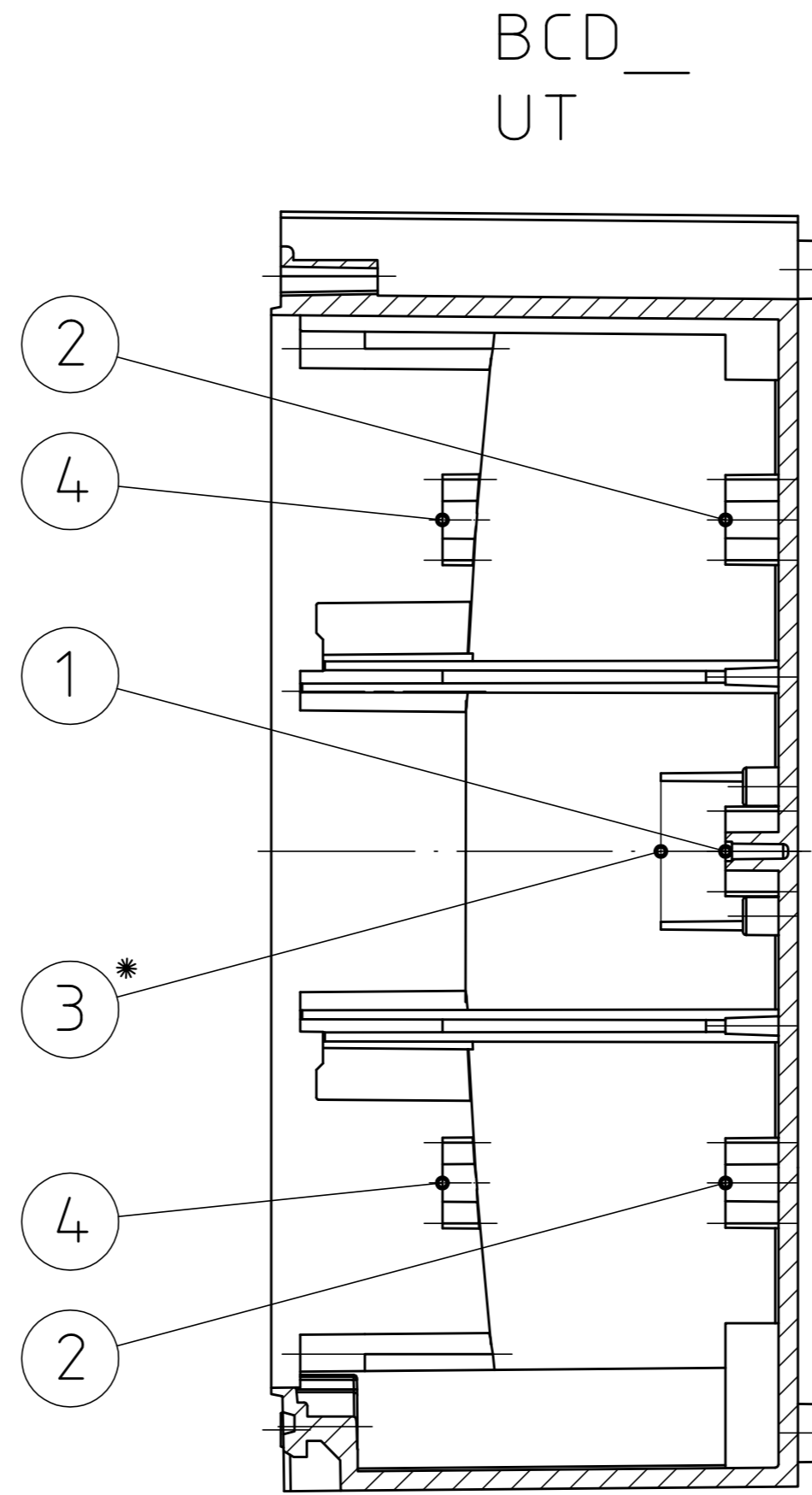
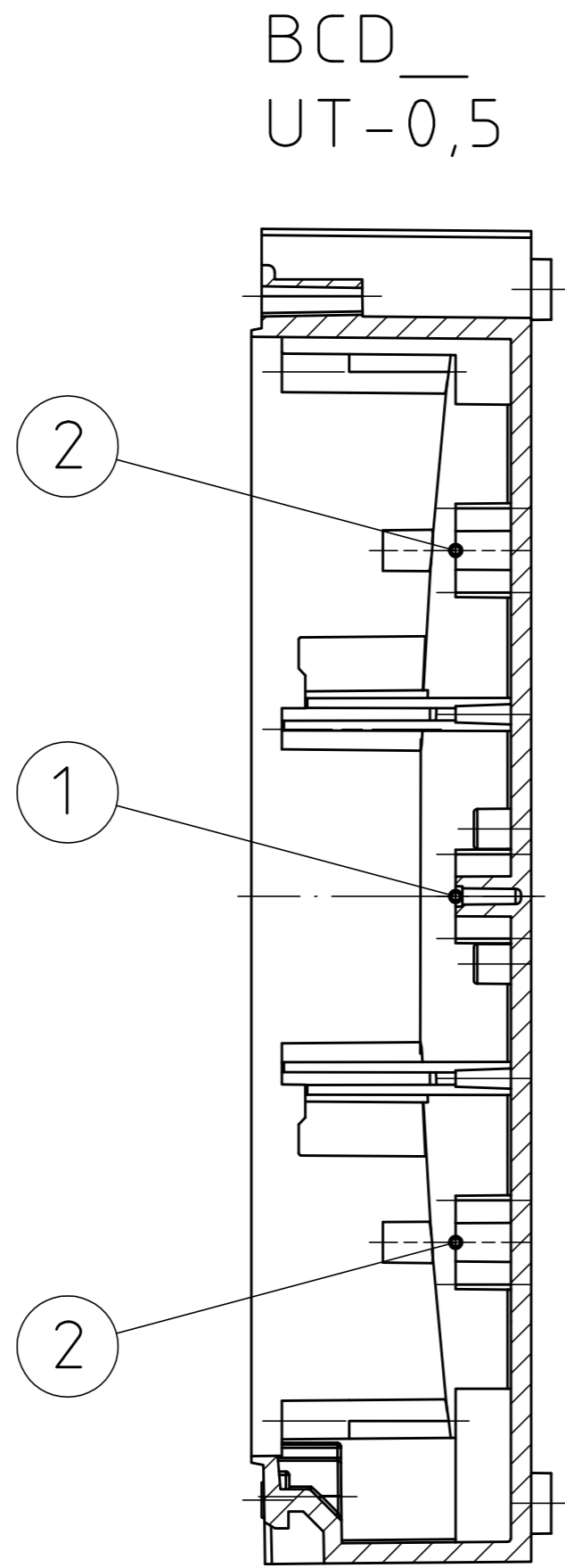


"Schutzvermerk nach DIN ISO 16016 beachten." "Please pay attention to copyright note DIN ISO 16016"



| Modell | Verwendung bei: | Länge | Position |
|-------------|-------------------------------------------------|--------|----------|
| TS 15.160.1 | BCD 160 Klemmenraum unten | 160 mm | ② |
| TS 15.185.1 | BCD 160 Klemmenraum oben | 185 mm | ④ |
| TS 35.160.1 | BCD 160 Mitte unten | 160 mm | ① |
| TS 15.190.1 | BCD 200 Klemmenraum unten | 190 mm | ② |
| TS 15.215.1 | BCD 200 Klemmenraum oben | 215 mm | ④ |
| TS 35.190.1 | BCD 200 Mitte unten / BCD 200 Klemmenraum unten | 190 mm | ①/② |
| TS 35.198.1 | BCD 200 Mitte auf Distanzbolzen | 198 mm | ③* |
| TS 15.225.1 | BCD 250 Klemmenraum unten | 225 mm | ② |
| TS 15.250.1 | BCD 250 Klemmenraum oben | 250 mm | ④ |
| TS 35.225.1 | BCD 250 Mitte unten / BCD 250 Klemmenraum unten | 225 mm | ①/② |
| TS 35.233.1 | BCD 250 Mitte auf Distanzbolzen | 233 mm | ③* |

* auf Distanzbolzen

| Model | use with: | length | position |
|-------------|---------------------------------------------------------|--------|----------|
| TS 15.160.1 | BCD 160 Terminal compartment down | 160 mm | ② |
| TS 15.185.1 | BCD 160 Terminal compartment up | 185 mm | ④ |
| TS 35.160.1 | BCD 160 Centre down | 160 mm | ① |
| TS 15.190.1 | BCD 200 Terminal compartment down | 190 mm | ② |
| TS 15.215.1 | BCD 200 Terminal compartment up | 215 mm | ④ |
| TS 35.190.1 | BCD 200 Centre down / BCD 200 Terminal compartment down | 190 mm | ①/② |
| TS 35.198.1 | BCD 200 Centre on distance bolt | 198 mm | ③* |
| TS 15.225.1 | BCD 250 Terminal compartment down | 225 mm | ② |
| TS 15.250.1 | BCD 250 Terminal compartment up | 250 mm | ④ |
| TS 35.225.1 | BCD 250 Centre down / BCD 250 Terminal compartment down | 225 mm | ①/② |
| TS 35.233.1 | BCD 250 Centre on distance bolt | 233 mm | ③* |

* Distance bolt necessary

Maßstab/
Scale: unmaßstäblich/not to scale

Zeichnungs-Nr. / Drawing-No.:
2K 5335.137.01

Artikel / Article:
BCD TS15/TS35

Katalogzeichnung/Catalogue drawing

A.Nr./
Alt-No.:
Datum/
Date:
DISK: 2 602 438
Datum/Date: 05.07.04 KH

BOPLA
A Phoenix Mecano Company