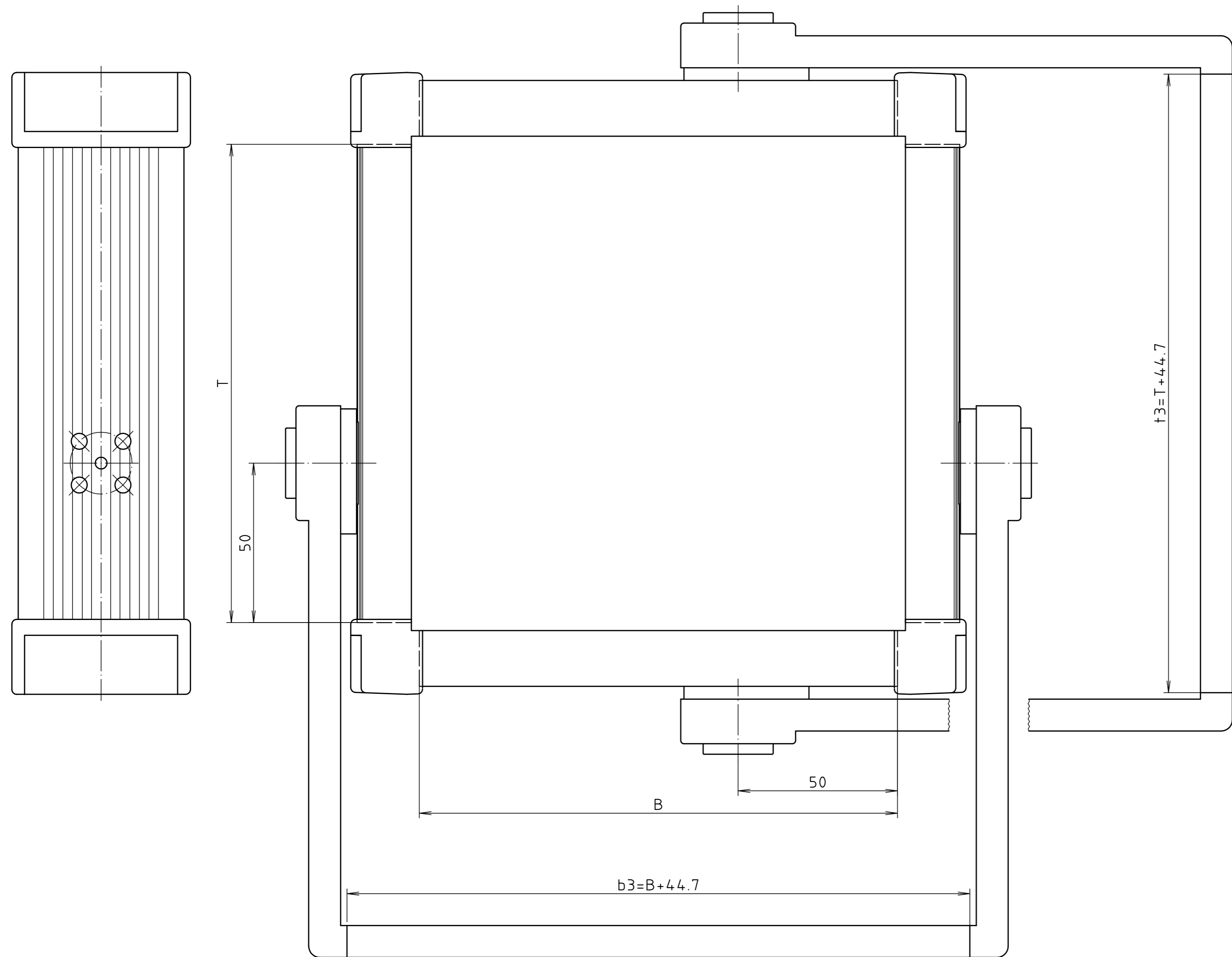


| Modell/ model | oder / or | | b3=B+44.7 | t3=T+44.7 |
|------------------|---|---|-----------|-----------|
| | für Frontprofil- länge B/ for front profile length B | für Seitenprofil- länge T/ for Side profile length T | | |
| AP 10 HS | 100 | 100 | 144.7 | 144.7 |
| AP 15 HS | 150 | 150 | 194.7 | 194.7 |
| AP 20 HS | 200 | 200 | 244.7 | 244.7 |
| AP 25 HS | 250 | 250 | 294.7 | 294.7 |



Griffverwendungen/
handle uses of

| Modell/ model | für Frontprofil- länge B/ for front profile length B | für Seitenprofil- länge T/ for Side profile length T |
|------------------|---|---|
| AP 51010 | AP 10 HS | AP 10 HS |
| AP 51015 | AP 10 HS | AP 15 HS |
| AP 51020 | AP 10 HS | AP 20 HS |
| AP 51025 | AP 10 HS | AP 25 HS |
| AP 51510 | AP 15 HS | AP 10 HS |
| AP 51515 | AP 15 HS | AP 15 HS |
| AP 51520 | AP 15 HS | AP 20 HS |
| AP 51525 | AP 15 HS | AP 25 HS |
| AP 52010 | AP 20 HS | AP 10 HS |
| AP 52015 | AP 20 HS | AP 15 HS |
| AP 52020 | AP 20 HS | AP 20 HS |
| AP 52025 | AP 20 HS | AP 25 HS |
| AP 52510 | AP 25 HS | AP 10 HS |
| AP 52515 | AP 25 HS | AP 15 HS |
| AP 52520 | AP 25 HS | AP 20 HS |
| AP 52525 | AP 25 HS | AP 25 HS |

"Schutzvermerk nach DIN ISO 16016 beachten." "Please pay attention to copyright note DIN ISO 16016"

Maßstab/
Scale: 1:1

Zeichnungs-Nr. / Drawing-No.:
2K 5285.0037.02

Artikel / Article:
AluPlan
AP . . HS
Katalogzeichnung / Catalogue drawing

| | |
|---------------------|-----------------|
| 3432 | 07.05.98 |
| A.Nr./ Art.-No.: | Datum/ Date: |

DISK: 2 801 622
Datum/Date: 16.02.98 HR